

# Cubes and Containers Design Kenya Limited


# About Us

- Cubes and Containers Design Kenya Limited is a mid sized design company. We specialize in design and conversion of shipping containers and other interior spaces. Also as a service, we sell and transport shipping containers.
  - We began operations in 2016 by offering design, container conversion and consultancy services to other container fabrication companies as an outsource service as Container Design Kenya. In 2018, we became registered as Cubes and Containers Design Kenya, an independent company.
- 

# Our Core Values

- Cubes and Containers thrives to achieve better container works in Kenya by our Motto; Quality and client satisfaction comes first.
- These are the core values that guide our operations:-
  - 1. Creativity**
  - 2. Quality with Affordability**
  - 3. Efficiency**
  - 4. Customer Satisfaction**
- Our products include;


# Container Home/Accommodation

- We provide secure, beautiful and Affordable Accommodation units with all the basic facilities of a modern home.
  - The units come complete with a sitting room, kitchenette , washroom and bedrooms. Inclusive is ceiling and wall insulation and padding, PVC/ceramic tiles, electric wiring, and plumbing works.
  - We produce both high end and on-a-budget houses but all with the best quality possible.
- 






# Containers Partitioning(Commercial stalls)

- Commercial containers value addition i.e partitioning and fabrication is also our speciality.
  - Most businesses now opt for temporary structures that are also secure and can be transported anytime when need arises.
  - We offer stalls/shops container partitioning at very affordable rates. Each stall is secured with steel doors and walls.
- 

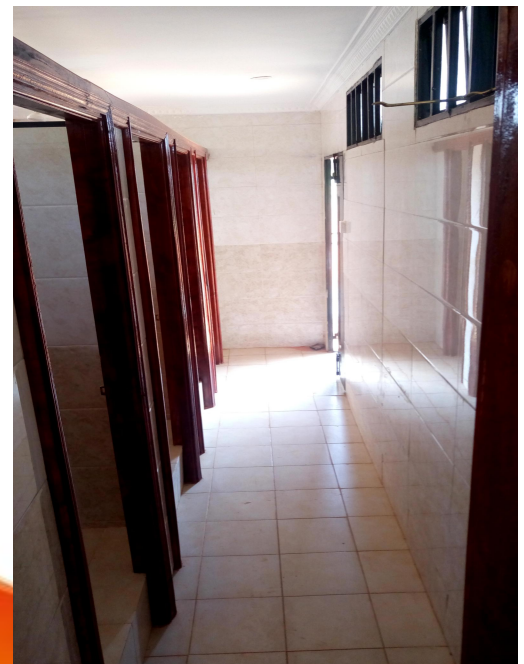





# Ablution Containers

- We realized the need for alternative ablution units that are cost effective, easy and fast to acquire as well as presentable and hygienic
  - We provide Urinal Ablution units, Children units as well as Normal adult units.
  - Most of our ablution units are designed with inclusivity where one or two booths are set aside for people living with disabilities (PWD)
- 

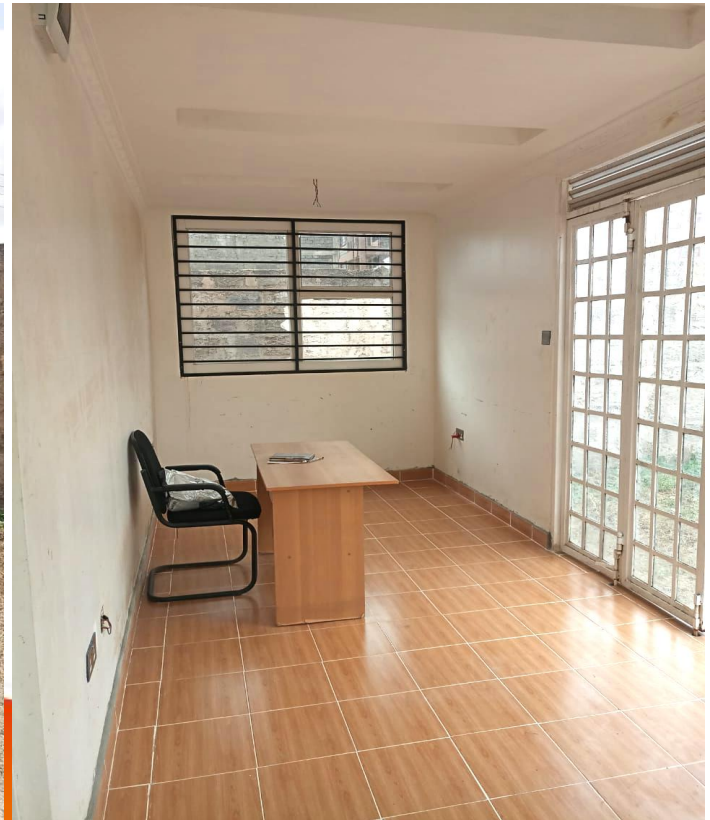




# Office Container Units


- We pride ourselves in converting Containers into the best portable offices.
  - Our Office units cannot be differentiated with most brick and Mortar Offices with added advantages of being cheaper and easier to acquire than the latter.
  - They come with insulative walling and ceiling to regulate temperatures, electric wiring, computer cabling, PVC Tiles, Sliding aluminium or steel casement windows and doors as well as provision for AC and Solar Panels Installation.
- 







# Others...

- Having been in the Dry Container sale and Fabrication for quite a while, We have honed skills that will convert a container into virtually anything a client requests.
  - We have converted containers into stand-alone kitchens, Health Care clinics, workshops, special shops, guard houses among others.
- 



# Computer Aided Designs

- We facilitate design illustrations for project proposals as well as individual's understanding of the project before actualization.
- We also facilitate designs for approvals where necessary as well as acquisition of permits upon request.







4 bedroom house



Cube's Office




20ft Retail Shops



2x40ft Clinic

# Our Clientele

- Corporate companies and NGOs
  - Building contractors and medium businesses
  - Churches, schools and other institutions who need Ablution containers and offices.
  - Individuals and Independent Businesses with specific and divergent needs.
- 

# Our Team

- To ensure quality in our works, we are a team of professionals with the required qualifications.
- Some of the membership we have within our team include;
  - Interior Designers Association of Kenya (IDAK)
  - National Construction Authority (NCA)



# Contact Us

- We have a very active and up to date online presence.
- Website;
- [www.cubesandcontainers.co.ke](http://www.cubesandcontainers.co.ke)
- Facebook;
- [www.facebook.com/CubesandContainers/](http://www.facebook.com/CubesandContainers/)
- YouTube;
- [www.youtube.com/channel/UCWrFqU7CMAy4AdO24I7jVKQ](http://www.youtube.com/channel/UCWrFqU7CMAy4AdO24I7jVKQ)

## **Emails:**

- [info@cubesandcontainers.co.ke](mailto:info@cubesandcontainers.co.ke)
- [design@cubesandcontainers.co.ke](mailto:design@cubesandcontainers.co.ke)

## **Phone Numbers:**

- +254721 642215
- +254752 642215
- +254711 143025

## **Our Physical Location**

- We are Located in Syokimau, off Mombasa Road along Katani Road.
- 

It is our pleasure to work with you.

[www.cubesandcontainers.co.ke](http://www.cubesandcontainers.co.ke)

